

Unika Product Guide



KEEP FLIES OUT!



UNIKA RETRACTABLE SCREEN

The Unika Retractable Screen benefits from a compact cassette and profiles manufactured in Extruded Powder Coated Aluminium. The screen mesh neatly retracts from view making this screen discreet. Window and door applications available, designed for domestic use. Face or reveal fitted internally or externally.

The Unika Window (**MUV**) (**MUV-BV**) is unobtrusive with its slimline rounded 36mm cassette. The spring tensioned screen simply pulls down and securely locks into the concealed side channel catches. An optional soft close brake can be fitted to slow the screen retraction if desired. Simple intermediate stops can also be fitted to allow the screen to be held in two positions, ideal for top and bottom opening windows. Now available in long drops when using the Better Vue mesh option.

Offers excellent visibility, air flow qualities and insect protection.

Window models available:

MUV- Standard (18x16) Mesh
MUV-BV – Better Vue Mesh.

NEW!
NEW FOR 2021
Unika Now Available in
Black & Anthracite (POA)



The **Unika Door (MUH) (MUH-2)** is available in both single and double options . Ideal for use with existing French doors, simple to install and easy to maintain. Soft close brakes are fitted as standard to all our door models. Strong magnetic strip closure. Offers excellent visibility , air flow qualities and insect protection.

Door models available:

MUH – Horizontal single door
MUH-2 – Horizontal double door.

All Unika models are fitted with our Standard Fibreglass (18x16) Charcoal Mesh. Better Vue mesh is only available for the Window versions (MUV-BV) .

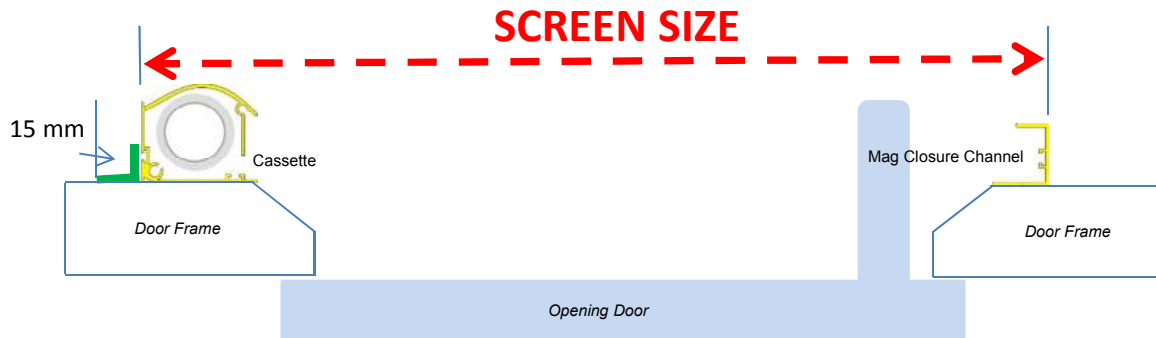
White or Brown finishes as standard. Special option RAL colours are available.
Please contact our Sales Team for further details.

Product	Code	Standard Specifications	Options (POR)
Unika Door <i>Single</i> <i>Rec Max Size</i> <i>W = 1000mm</i> <i>H= 2100mm</i>	MUH	<ul style="list-style-type: none"> • Single (36 x 43mm) Slimline Rounded Extruded Powder Coated Aluminium Cassette. • Spring tensioned Fibreglass (18x16) Charcoal Mesh . • Powder Coated Aluminium 30mm top and bottom channels. • Full height Powder Coated Aluminium magnet side channel closure. • Front and back surface mounted rigid PVC handles. (x 2). • Soft close brake. • Face fitting and recess brackets. <i>Allow 15 mm for face fitting brackets, and 5mm for recess brackets.</i> • 7mm PVC Cover Caps 	<ul style="list-style-type: none"> • <i>Anti Wind Pile.</i> • <i>Re-inforced bar handle profile.</i> • <i>RAL colours .</i>
<i>Double</i> <i>Rec Max Size</i> <i>W = 1600mm</i> <i>H= 2100mm</i>	MUH-2	<ul style="list-style-type: none"> • As above with Double (36 x 43mm) Slimline Rounded Extruded Powder Coated Aluminium Cassettes. • Surface mounted PVC sliding shoot bolts to one door. 	
Unika Window <i>Rec Max Size</i> <i>W = 1200mm</i> <i>H= 1200mm</i>	MUV	<ul style="list-style-type: none"> • Slimline (36 x 43mm) Rounded Extruded Powder Coated Aluminium Cassette. • Spring tensioned Fibreglass (18x16) Charcoal Mesh . • Powder Coated Aluminium 30mm side channels. • Front surface mounted rigid PVC handles. (x 2). • Pull cord. • Concealed catches. • Face fitting and recess brackets. <i>Allow 15 mm for face fitting brackets, and 5mm for recess brackets.</i> • 7mm PVC Cover Caps 	<ul style="list-style-type: none"> • <i>Anti Wind Pile.</i> • <i>Soft close brake.</i> • <i>Re-inforced bar profile handle.</i> • <i>Intermediate stops.</i>
<i>BV</i>	MUV-BV	<ul style="list-style-type: none"> • As MUV with Better Vue Long Drop Mesh (Max 2400mm) 	<ul style="list-style-type: none"> • <i>RAL colours .</i>
<i>SLS</i>	MUV-SLS	<ul style="list-style-type: none"> • As MUV with Spring Loaded Locking Handle System. (SLS) 	

Please take note before you measure;
Screens are manufactured to **SCREEN SIZE** (edge of frame to edge of frame excluding fittings). FLYDOR do not make any adjustments or allowances. All Measurements are in mm. Sizes to be supplied as Width x Height.

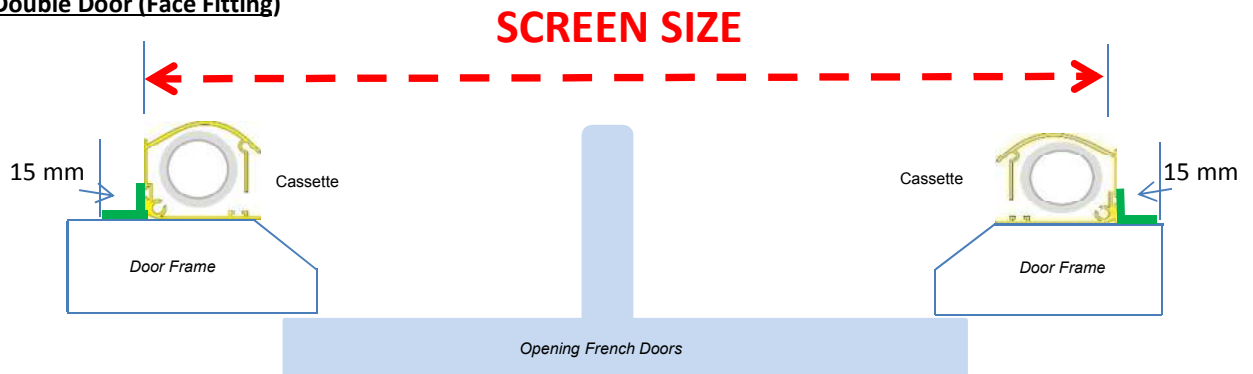
WIDTH

Single Door (Face Fitting)



(Birds eye view illustrated - Minimum width shown, side guide and cassette can be positioned to suit).

Double Door (Face Fitting)



(Birds eye view illustrated - Minimum width shown, cassettes can be positioned to suit).

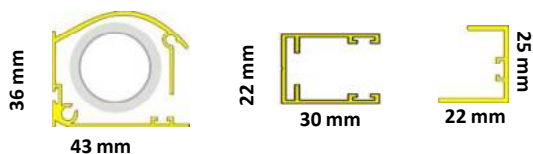


Recess Fitting Width

If using the cassette fixing "m" clips allow 5mm for fitting.

Tip - If the inner handle(s) on the screen is catching the door frame, the top and bottom guides can easily be cut down on site to reduce the width accordingly.

Unika Profile (Not to scale)



HEIGHT



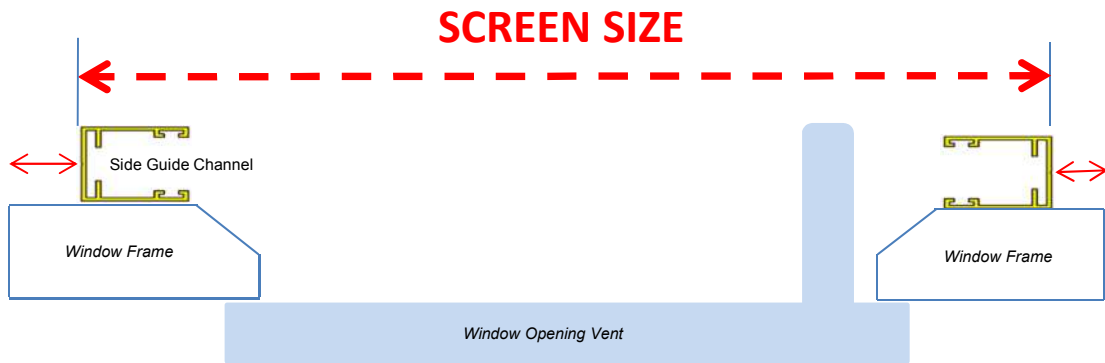
Height Measurement (All types)

The height is from the top edge to bottom edge of the cassette.

Tip - This measurement is critical! Watch out for plinths and any lips which are common with UPVC doors. Allow yourself at least 5mm if fitting into a recess.

Please take note before you measure;
Screens are manufactured to **SCREEN SIZE** (edge of frame to edge of frame excluding fittings). FLYDOR do not make any adjustments or allowances. All Measurements are in mm. Sizes to be supplied as Width x Height.

WIDTH



(Birds eye view illustrated - Minimum width shown, side guides can be positioned to suit).

HEIGHT

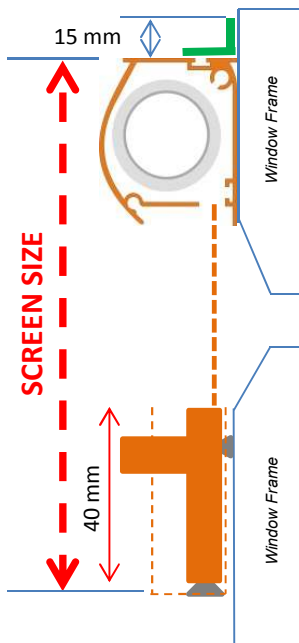


Face Fixing L Bracket

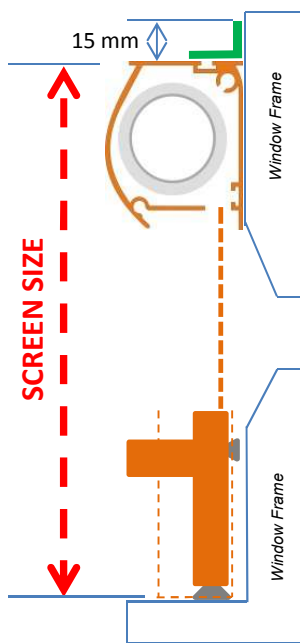


Recess Fixing M Clip

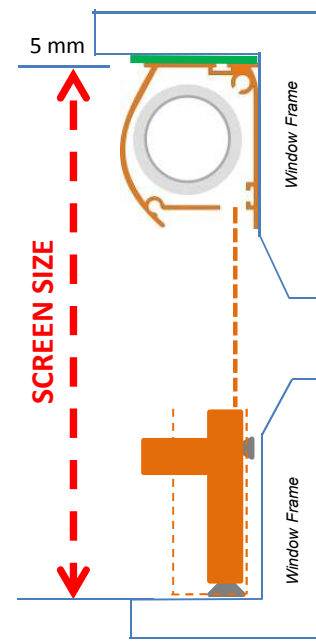
Face Fitting without sill.



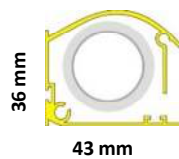
Face Fitting with sill.



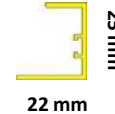
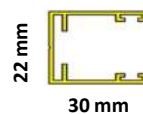
Recess Fitting with or without sill.



Unika Profile
(Not to scale)



Side Guide Channel

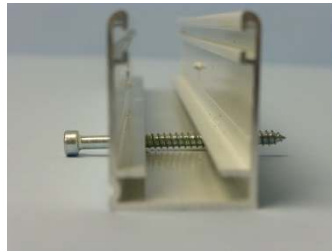


Mag Catch Channel

Installation guide .

Unika Window Screens (All MUV models)

Step 1 Before proceeding, decide which of fitting options you wish to use and prepare the side guides prior to assembling the unit.



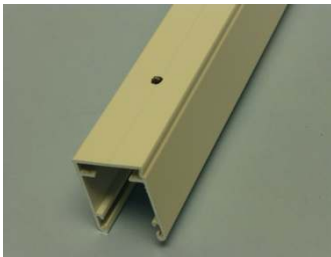
FACE FITTING Option A Drill a 3.5 mm hole through the outer groove, ensuring you remain within the recessed area in pic 2.

(Tip) Use a 2mm bit for the pilot hole into the frame. Please note you will need a hex bit for the screws



FACE FITTING Option B Drill directly through the guide using a 3mm bit. Open up the front facing hole to 7mm and use the cover caps provided for a neat finish.

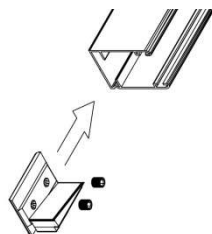
(Tip) Use a small screw (3.5x 16) to affix to frame.



RECESS FITTING Option C Drill 3.5 mm holes through the sides of guides, for directly fixing into the recess. Typically two or three depending on height.

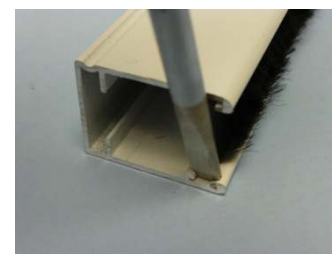
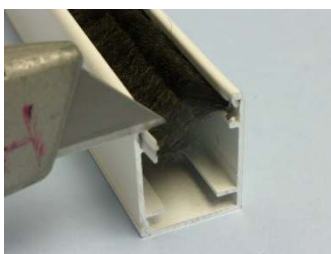
(Tip) Use the special tool 8460.0 to allow the fluffy pile to be safely moved when fitting.

Step 2 Fitting the Concealed Catches to the side guides.



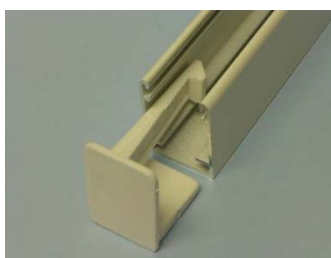
OPTIONAL INTERMEDIATE STOPS. If using the optional intermediate stops, slide into the guide ensuring the "wedge" is to the (grooved) front of the side guide. Leave loose, adjust to desired height once the screen has been installed.

(Tip) Gently does it! Avoid overtightening the grub screws when adjusting. This can cause damage to the side guide and failure to work properly



To avoid the fluffy pile being pulled back into the cassette during use. Trim about 6mm off the length of the pile. Simply crimp the channel top and bottom with a flat headed screwdriver and hammer.

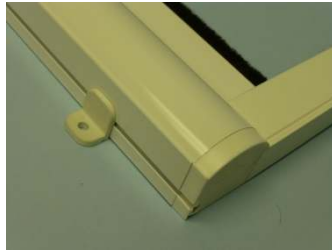
(Tip) Gently does it! Avoid bending the guide out of shape by hitting too hard.



Slide the catches (marked L or R) into the appropriate guide as shown. Ensure the hook is to the (grooved) front. Crimp the guide to hold the catch firmly in place. This prevents catches being forced out in operation.

(guides are shown with no pile for illustration purposes)

Step 3 Preparing the Cassette prior to assembling the unit.

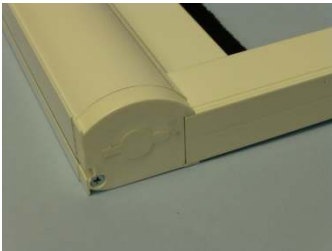
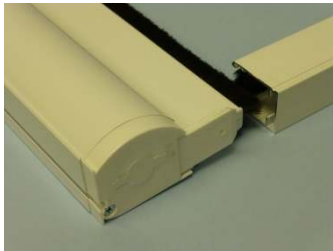


FACE FITTING Slide the face fitting L into the groove on the top of the cassette .



RECESS FITTING Insert the additional fluffy pile into the groove in the top of the cassette. The M bracket is directly fixed to the top of the recess and the cassette simply clicks in place .

Step 4 Assembling the unit prior to fitting.

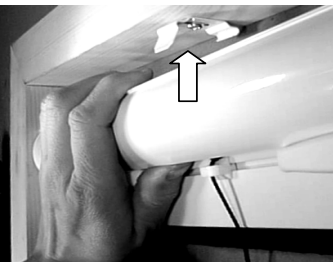


Push the side guides into place ensuring the lugs are correctly located. There should be no gaps as per pic 2.

Step 5 Installation of the unit.



FACE FITTING Offer the screen against the frame, ensure the screen is square, then mark the fixing points. Carefully drill the pilot holes. Loosely fit the screen in place using suitable screws. Check operation of screen, before tightening.



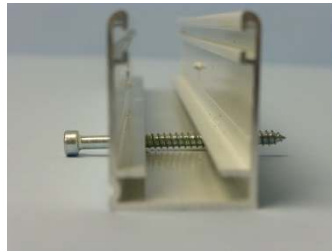
RECESS FITTING Offer the screen into the recess, ensure the screen is square, then mark the fixing points for M clips. Remove the screen, Directly fit the M Clips to the top of recess. Click the screen into place. Mark the fixing points for side guides. Directly fix the side guides with suitable screws and fittings if required.

Step 6 Operation of the unit.

Installation guide .

Unika Door Screens (All MUH & MUH2 models)

Step 1 Before proceeding, decide which of fitting options you wish to use and prepare the top and bottom guides prior to assembling the unit.



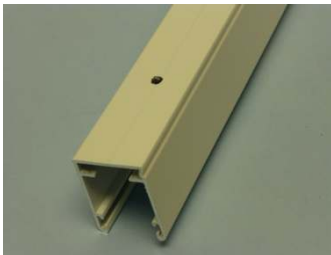
FACE FITTING Option A Drill a 3.5 mm hole through the outer groove, ensuring you remain within the recessed area in pic 2.

(Tip) Use a 2mm bit for the pilot hole into the frame. Please note you will need a hex bit for the screws



FACE FITTING Option B Drill directly through the guide using a 3mm bit. Open up the front facing hole to 7mm and use the cover caps provided for a neat finish.

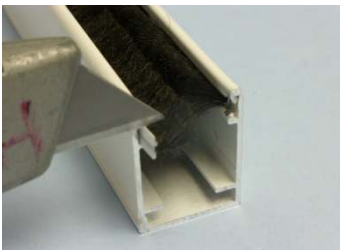
(Tip) Use a small screw (3.5x 16) to affix to frame.



RECESS FITTING Option C Drill 3.5 mm holes through the bottom of guides, for directly fixing into the recess. Typically two or three depending on height.

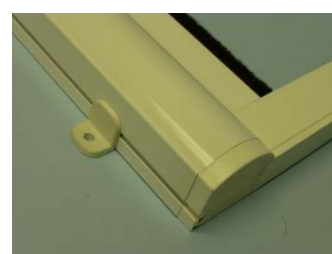
(Tip) Use the special tool 8460.0 to allow the fluffy pile to be safely moved when fitting.

Step 2 Securing the Fluffy pile



To avoid the fluffy pile being pulled back into the cassette during use. Trim about 6mm off the length of the pile. Simply crimp the channel at each end with a flat headed screwdriver and hammer. *(Tip) Gently does it! Avoid bending the guide out of shape by hitting too hard.*

Step 3 Preparing the Cassette(s) prior to assembling the unit.

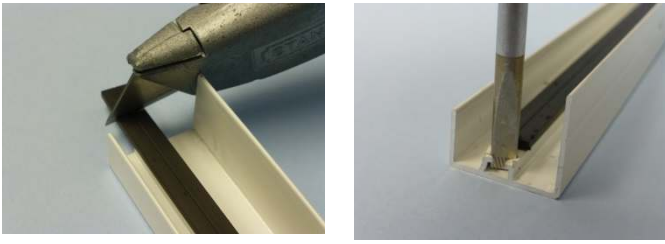


FACE FITTING Slide the face fitting L into the groove on the top of the cassette .



RECESS FITTING Insert the additional fluffy pile into the groove in the top of the cassette. The M bracket is directly fixed to the side of the recess and the cassette simply clicks in n place .

Step 4 Preparing the Magnetic Catch Channel (Single Door).



Snip off a small piece of the magnet. Crimp both ends as shown to secure the strip in place.

Step 5 Assembling the unit prior to fitting.



Push the guides into place ensuring the lugs are correctly located. There should be no gaps as per pic 2. Push the mag channel onto the guide ends.

Step 6 Installation of the unit.



FACE FITTING Offer the screen against the frame, ensure the screen is square, then mark the fixing points. Carefully drill the pilot holes. Loosely fit the screen in place using suitable screws. Check operation of screen, before tightening.

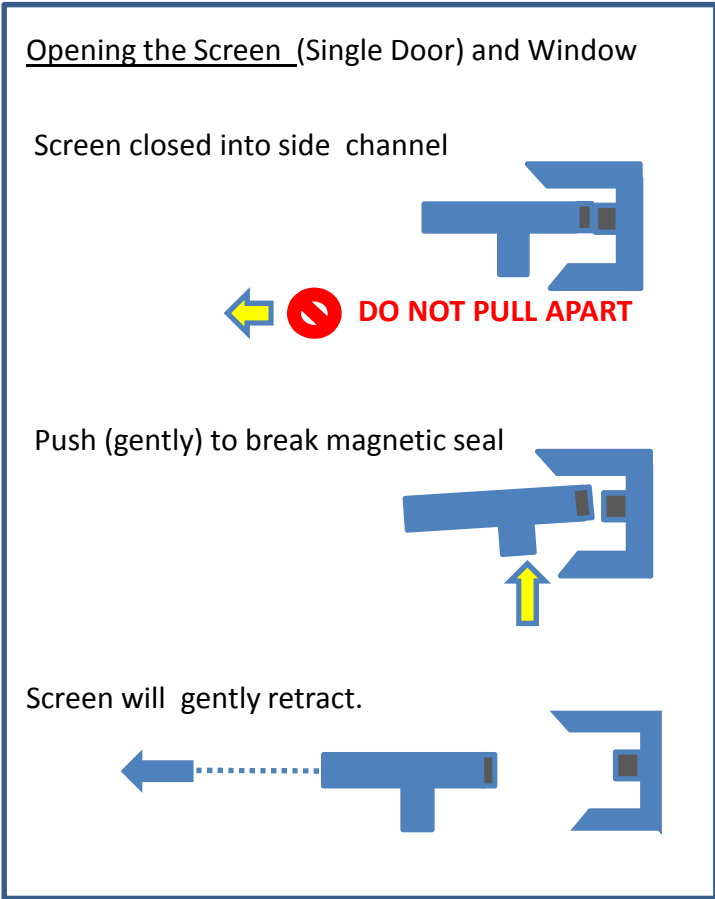
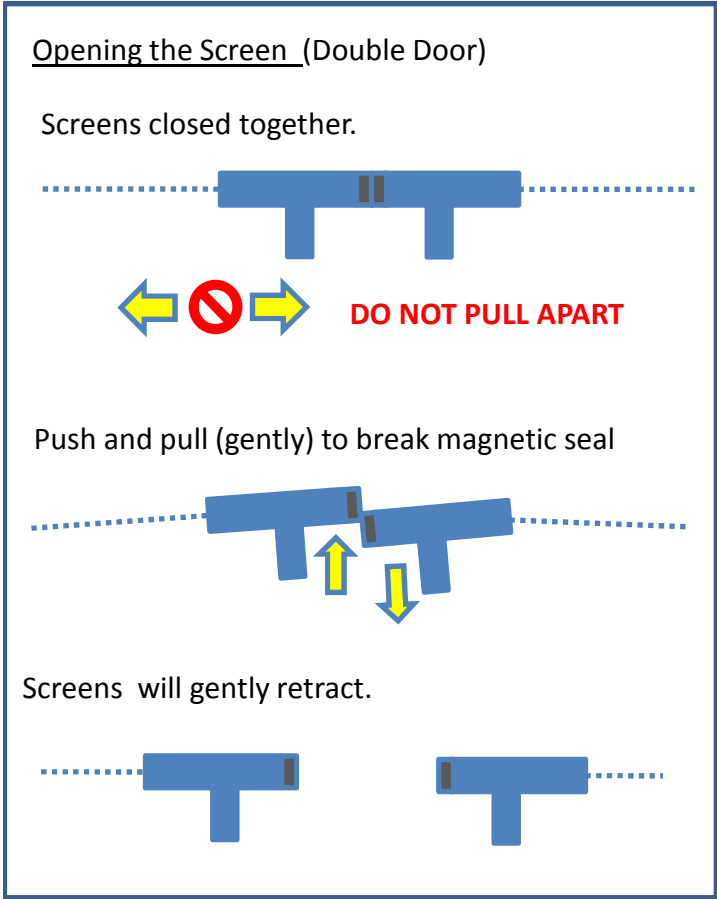
RECESS FITTING Offer the screen into the recess, ensure the screen is square, then mark the fixing points for M clips. Remove the screen, Directly fit the M Clips to the side of recess. Click the screen into place. Mark the fixing points for the channels and Mag Channel. Directly fix the screen with suitable screws and fittings as required.

Step 7 Shoot Bolt Catches (Double Door)



Bring both doors together and mark dead centre, top and bottom. Offer up the shoot bolt keepers as shown and mark for drilling in the centre the large elongated hole. Loosely fix the keepers into place with the screws provided. (This will give you a little adjustment if needed). Check the doors are square and working properly before drilling the smaller hole, and securing the keeper finally into place.

To Operate the screens . *Single Door and window* Gently pull the screen across/down to the mag catch channel.
Double Door bring the slave door over to the centre of the screen and secure in place with the shoot bolts. The main door pulls across to the slave door and is held in place by the magnetic strips. To open, break the magnetic seal by gently pulling the handle towards you. **Do not pull “apart”** The Mesh will then gently retract back into its cassette.



Maintenance:

To keep your screen in perfect working order please keep the guides free from debris and dirt. Should you need to clean the mesh, open the screen fully and simply lightly sponge with a mild cleaning agent and allow to dry before retracting. Simply wipe the framework with a damp soapy cloth and dry with a towel.



For our full range of products please visit our website www.flydor.co.uk

You can purchase your Flydor screens, from your local distributor and installer @



Priory Works, Newton St, Newton St Faith, Norwich , Norfolk, NR10 3AD
Tel 01603 897799 sales@flydor.co.uk www.flydor.co.uk